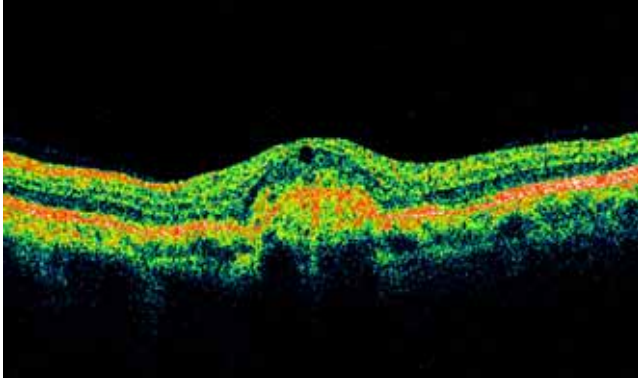
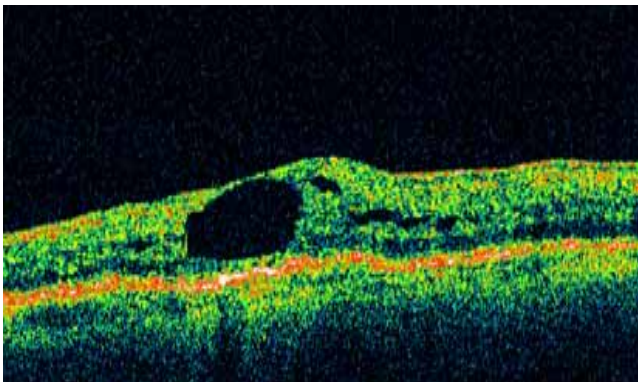


**What does direct cross-sectional retinal imaging offer that's unique?**

With Stratus OCT images of the layers of your retina, your doctor can see and measure delicate structures and monitor any changes. Stratus OCT is the only instrument that provides these images, so it's the ultimate tool for precise diagnosis and treatment.

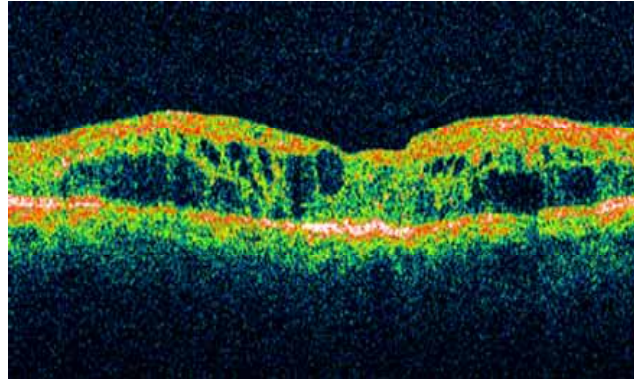


**Age-Related Macular Degeneration (AMD)** is a deterioration of the macula, which is the part of the retina responsible for sharp, direct vision. AMD may include abnormalities below the retinal surface. Prior to treatment, this can interfere with central vision.

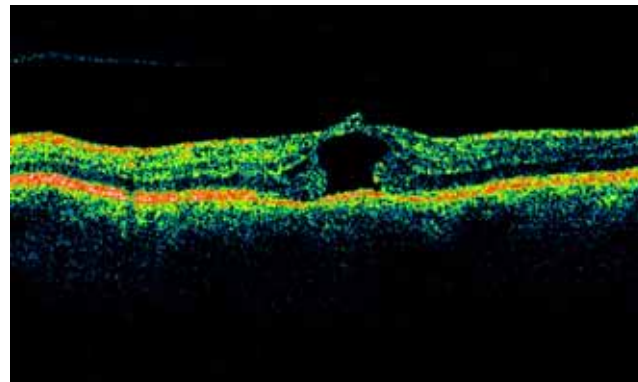


**Post-Cataract Surgery Cystoid Macular Edema** consists of fluid-filled cysts that form within the retina causing the retina to be swollen. This is usually noticed as blurry or distorted vision.

**Stratus OCT: Revealing the complete picture.** Stratus OCT offers the ultimate benefit for people with retinal abnormalities—the best possible care. Early detection helps your doctor to diagnose and control retinal problems before avoidable, permanent damage is done.

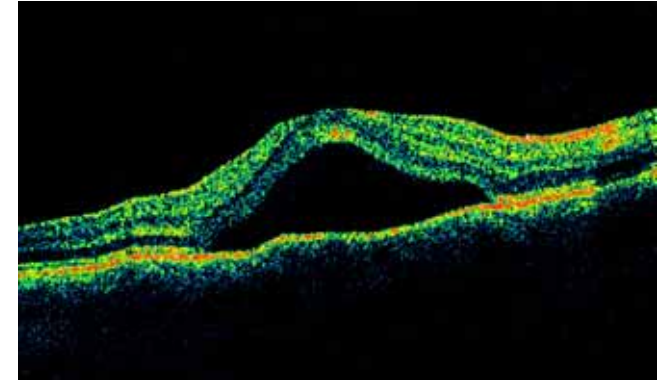


**Diabetic Macular Edema** is an accumulation of fluid within the retina. Prior to treatment, this can produce dark or gray areas in the field of vision or reduced sharpness of vision, but sometimes it can occur without loss of vision.

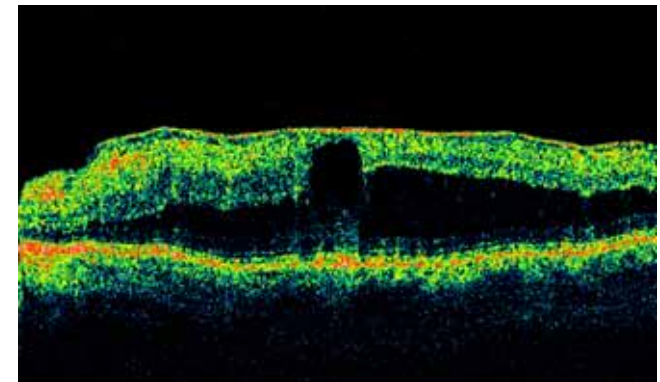


**Macular Hole** is a hole in the retina. Prior to treatment, the loss of vision can be very slight to very noticeable, depending on the size of the hole.

**Central Serous Chorioretinopathy** is a blister of fluid that collects underneath the retina. Prior to treatment, symptoms can include a dark or gray area in the field of vision.



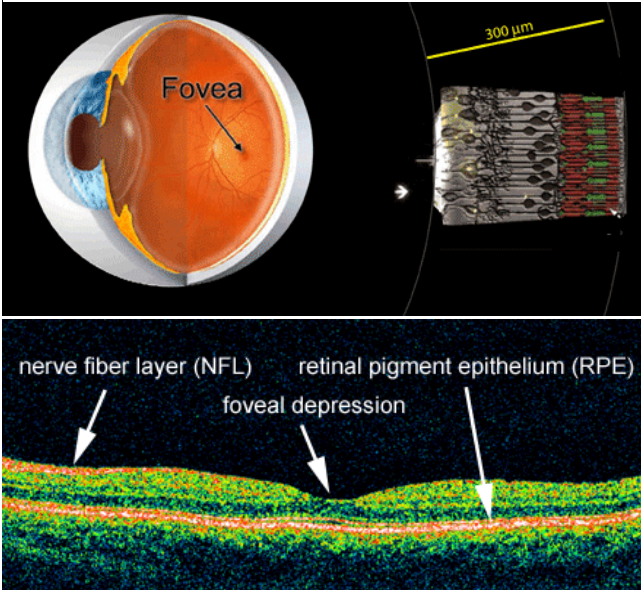
**Epiretinal Membrane** is a deposition of scar tissue on the surface of the retina. Prior to treatment, the most common symptoms are reduced sharpness of vision and visual distortion.



**Stratus OCT** enables your doctor to watch closely for the slightest retinal changes and respond as needed. Stratus OCT gives your doctor high quality, highly accurate knowledge of your eyes that is simply unavailable with any other technology. This extremely detailed understanding of your eyes can be instrumental and essential in safeguarding your vision for many years to come.



**What does direct cross-sectional retinal imaging offer that's unique?** With Stratus OCT images of the layers of your retina, your doctor can see and measure delicate structures and monitor any changes. Stratus OCT is the only instrument that provides these images, so it's the ultimate tool for precise diagnosis and treatment.



**Your doctor has recommended an advanced diagnostic scan to evaluate the health of your retina.**

For this procedure, your doctor will be using a highly innovative instrument called Stratus OCT™. This advanced-technology instrument never touches your eye, so there's no discomfort. It's safe and requires only a few minutes of your time. Most importantly, Stratus OCT helps your doctor to clearly see the internal structures of your eye, so problems can be treated before they progress. The unique view that your doctor sees with Stratus OCT is called a direct cross-sectional image of your retina.



**Dr Ed Hauptman , Eye Specialist**

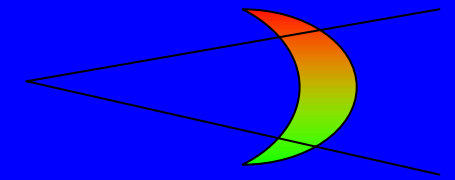
#### **Cost of OCT.**

OCT is an effective method of ophthalmic diagnosis. The cost of an initial examination is \$85.00 . At this time it is not rebateable by Medicare. Your pupils may be dilated with drops prior to the procedure and these may make your vision blurred for several hours.



**BERWICK EYE AND  
SURGICENTRE  
22 Langmore Lane Berwick**

**97689210**



**Looking deeper  
into the health of  
your  
RETINA**

